

Anti-GPA33 hlgG1 Antibody(DART-2)

Product information

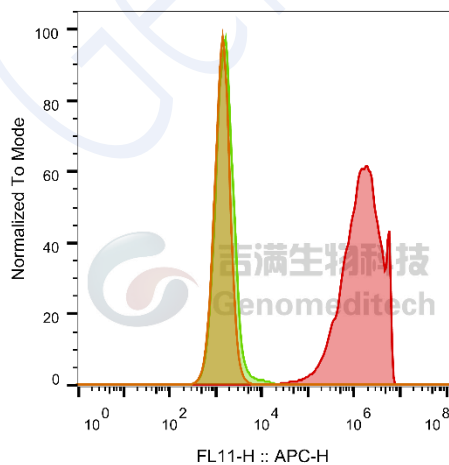
GM-52271AB-10	10 µg
GM-52271AB-100	100 µg
GM-52271AB-1000	1 mg

Antibody Information

Species Reactivity	Human; Cynomolgus;
Clone	DART-2
Source/Isotype	Monoclonal human IgG1, κ
Application	Flow cytometry;
Other Names	A33
Gene ID	10223(human); XP_005539922(Cynomolgus)
Storage	Store at 2-8°C short term (1-2 weeks).Store at ≤ -20°C long term. Avoid repeated freeze-thaw.
Formulation	Phosphate-buffered solution, pH 7.2.
Endotoxin	< 1 EU/mg, determined by LAL gel clotting assay

Data Examples

Flow cytometry H_GPA33 CHO-K1 Cell Line (Catalog # GM-C24354) was stained with Anti-GPA33 hlgG1 Antibody(DART-2) or isotype control antibody.



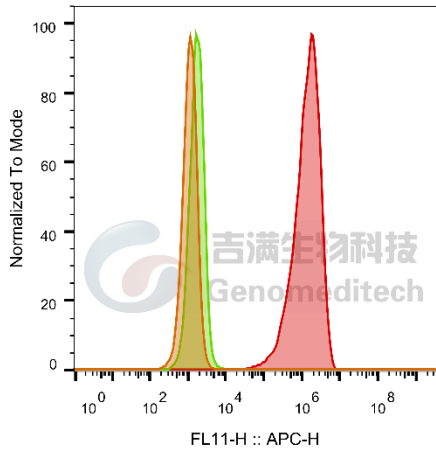
SampleID	Geometric Mean : FL11-H
CHO-K1 anti-GPA33+APC-2nd Ab	1396
CHO-K1 H_GPA33 H_IgG+APC-2nd Ab	1614
CHO-K1 H_GPA33 anti-GPA33+APC-2nd Ab	1.34E6

Fig. FACS

Version:0.3.2.240521

Flow cytometry

Cynomolgus_GPA33 CHO-K1 Cell Line (Catalog # GM-C24363) was stained with Anti-GPA33 hlgG1 Antibody(DART-2) or isotype control antibody.



SampleID	Geometric Mean : FL11-H
CHO-K1 anti-GPA33+APC-2nd Ab	1123
CHO-K1 Cyno_GPA33 H_lgG+APC-2nd Ab	1723
CHO-K1 Cyno_GPA33 anti-GPA33+APC-2nd Ab	1.29E6

Fig. FACS